

- Negotiations happen routinely in situations of political conflict, contesting sites etc. However, they embody existing power structures
- When digital technology is introduced, these structures can be dissolved leading to new outcomes

When should you use it?

- Co-ordinating stakeholders
- Agreeing on priorities
- Contested Site(s)
- Conflicting politics
- Negotiated Settlements

When should you use it?

- Single or multi-issue disputes
- Diverse stakeholders
- Two- or multi-party conflicts
- Parties are willing but are stuck
- Preventive interventions
- Last ditch effort to avoid further costly processes e.g. litigation

Bandera Street, Santiago, Chile

INTERVENTIONS FOR STREET DESIGN AND NEW MOBILITY

STREET SPACE ALLOCATION

Bandera Street is one of the most busy and major thoroughfare in central Santiago. In this project we explored the impacts of different policies: pedestrianization, closing off parking etc. on the street.

NEW MOBILITY

Understanding street life / streetscape in the context of e-bikes, bicycles and autonomous vehicles is critical and we exported the data out of Geodesignhub using the API to integrate with external analysis tools.

TACTICAL URBANISM

Geodesignhub suited the purpose to rapidly come up with an early stage masterplan including the selection of key interventions whereas we chose 'Street Anatomy' to help envision the impact of such interventions in the pedestrian network.

POLICY ANALYSIS

The street analysis is done through a semi-automated geo-computational method, that allows to collect data from any given typical cadastral map that graphs the kerb and property lines. Using the comprehensive API, we exported the data out of Geodesignhub and used external tools for this analysis.



POST-DISASTER REHABILITATION AND RECOVERY STRATEGY

Norcia, Perugia, Italy



PUBLIC ENGAGEMENT

The town of Norcia in the province of Perugia in south-eastern Umbria in central Italy. The area around the town is known for its scenery and is a base for mountaineering and hiking. In late 2016, a couple of powerful earthquakes struck the region causing major damage in the town. We used the public voting features in Geodesignhub to share the results of this work to the general public.

RECOVERY VS. REHABILITATION

Geodesignhub was used to develop a medium term rehabilitation strategy and understand the impact of policies for recovery. The software was used to develop a series of interventions and organize efforts towards long term rehabilitation of citizens. We utilized data from the National Seismological Centre and other labs to support the analysis.



AGENCY CO-ORDINATION

As a part of the geodesign workshop, there were participants from the emergency response agencies, the office of the mayor and other experts. Working together the experts and citizens were able to negotiate and analyse trade-offs in their preferred sequence of actions. Open source plugins developed by Geodesignhub were utilized to understand the negotiated outcomes.

<https://www.geodesignhub.com/webinar>

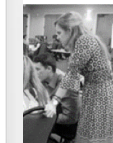
PUBLIC ENGAGEMENT FOR FISHERIES AND TOURISM DEVELOPMENT

Cape Villages, Co. Kerry, Ireland

MULTI-JURISDICTION GEODESIGN FOR MANAGEMENT OF COASTAL GEORGIA

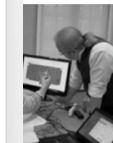
Georgia, USA

Geodesignhub demonstrated an innovative use of a collaborative geodesign framework, to address multi-jurisdictional planning, by evaluating the impacts from designs evaluated at the county and regional level in real-time. Stakeholders organized in two regional, conducted simultaneous evaluation at the county and regional level.



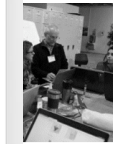
MULTI-JURISDICTION

The region of Coastal Georgia consists of ten counties: six coastal counties and four contiguous inland ones. Some counties have vigorous economies projected to grow with high rates of in-migration as well as natural growth, others face population decline.



CO-ORDINATION

The aim of this study was for ten single-county teams working at the county scale and two regional teams, each looking at issues of conservation and development through a series of iterations and negotiations, to generate and compare alternative designs scenarios for the future of the coast of Georgia.



NEGOTIATIONS

County design teams delineated areas for design and planning policies, as well as projects for implementation while accessing both county-level and regional views. A regional level team prioritized ecological conservation, another prioritized economic development, toward region-wide plans incorporating all county plans.

SIGN
 "Geodesign fosters collaborative decision making. It helps practitioners see connections between geography and society. Participants from various backgrounds and points of view can run what-if scenarios and assess the consequences of those assumptions".
 - Planning Director of the Coastal Regional Commission

management context. In this case, the community themes: economic development, tourism Using Geodesignhub, complex negotiations can be managed and utilizing existing data.



ESSENCIAL

Mussel farming is the primary activity in the area. The community is interested in developing new infrastructure e.g. the Pier and supporting the growth of the industry.



FINANCIAL DECISION MAKING

The community wanted to engage all the citizens to develop a management strategy and implementation schedule for interventions and understand the financial implications.

Geodesignhub provided the platform for structured negotiations and accommodated the different viewpoints of all the citizens in the community. Using the open source financial model and analysis tools, the community was able to develop a consensus driven, negotiated economic and administrative management strategy.